

Campbell® Blocks Table of Contents

Begun as a forging company in 1834, Campbell/Brewer-Titchener first manufactured horse harnesses, then carriage hardware, then horseless carriage hardware. From hardware for power lines in the 1930's, to forgings for the war effort in the 40's. Campbell/Brewer-Titchener began making high quality, wire rope and chain fittings in the 50's. Today the line includes well over 1000 different types and sizes of drop-forged eyebolts, wire rope clips, shackles, swivels, hooks, turnbuckles and more.

Since 1973, when Campbell/Brewer-Titchener acquired the Boston & Lockport Corporation, the brand has also been a leading name in high quality tackle blocks. This line includes blocks with wood, metal and nylon shells for fiber, manila or wire rope. Many options are offered: a wide selection of drop forged hooks, eyes and shackles; various bushing types; and models with one to four sheaves. Replacement sheaves, bushings and pins are also available.



DNV Certification, Inc.
ISO 9001 REGISTERED FIRM

The Campbell operation facilities in York, PA, and Cortland, NY, conform to Quality Standard ISO 9001.

Contents	(by Figure No.)
3001-3003	
3011-3013	
3031-3032	
3041-3042	
3061-3062	
3071, 3073	
3072, 3074	
3101-3103	
3075	
4001, 4011, 4012	
4033	
4083, 4084	
4091, 4101	
4099	
4102	
4184	
4213, 4231	
4241	
5015, 5022, 5023	
6124, 6151	
6152, 6153, 6150T, 6191H	
6731, 6732	

Contents	(by Product)
Bight Angle Factor	
Blocks, Lineman's	
Blocks, Manila and Wire Rope	
Blocks, Manila Rope	
Blocks, Fiber Rope	
Blocks, Lubrication	
Blocks, Selection of	
Blocks, Wire Rope	
Definitions	
Hooks	
Important Information	
Inspection of Blocks	
Load on Blocks	
Maintenance of Blocks	
Marine Hardware	
Public Utility Hardware	
Reeving of Blocks	
Sheaves, Manila Rope	
Sheaves, Wire Rope	
Warning Statement	

Definitions: Important Block Terms

Bight:	The area formed by the angle of the incoming and outgoing line (see figure #2, page 155).
Fairleading:	To change the direction of pull on a lead rope.
Line Pull:	The line pull is the amount of force transmitted to the rope by the winch, or other forms of power. All Working Load Limits are based on “ resultant loads. ”
Mechanical Advantage:	The amount by which a block system multiplies the force (or load) applied to it.
Parts of Line:	The number of lines needed for a given load.
<u>Loads</u>	
Ton:	Ton is equal to 2240 LB unless otherwise noted.
Proof Test:	Campbell® has the ability to proof test all blocks and fittings. The usual proof test is twice the Working Load Limit. Proof testing and certifying will be done at customer’s request, at extra cost.
Side Load:	The result of a load which is applied off-center.
Shock Load:	The result of the rapid application of force (such as impacting and /or jerking), or the rapid movement of a static load.
Ultimate Load:	The average load at which a product fails, or no longer supports the load.
Working Load Limit:	The Working Load Limit (WLL) is the maximum resultant load which should ever be applied to the product in service, even when new, and when the load is uniformly applied in direct tension.

Caution should be used when determining the resultant load, as the manner in which the product is used can increase the load. (Refer to Figure1, page 155)

ADVERTENCIA

- Antes de usar las pastecas, conozca el limite de carga de trabajo de los mismos.
NO EXCEEDA EL LIMITE DE CARGA DE TRABAJO.
- Las cargas de trabajo son las fuerzas resultantes de las cargas de trabajo.

WARNING

- Know the Working Load Limit of the block, or blocks, to be used.
DO NOT EXCEED THE WORKING LOAD LIMIT.
- Working Loads are Resultant Working Loads.

Warning Statement - Blocks

BLOCK USE AND MAINTENANCE INFORMATION:

Read, understand and follow these warnings and instructions prior to selection, maintenance and use of tackle block systems.

WARNING



Falling load may cause death or serious injury

- Do Not exceed “**Working Load Limit**”
- Do Not stand under load or in bight
- Do Not side load or shock load
- Do Not use worn or damaged block or rope

IMPORTANT: Read and understand the instructions and warnings before using this block. It is the responsibility of the employer to place this information into the hands of the operator.

INSTRUCTIONS FOR USE

- Do Not exceed the “**Working Load Limit**” of the block(s) being used. Check the label on the block or refer to the CooperTools catalog
- Do Not exceed the “**Working Load Limit**” or operating limitations of the rope being used. If uncertain, consult the rope manufacturer
- Use the recommended rope diameter. See the label or CooperTools catalog
- Know the weight of the load to be lifted and the conditions of the lift. For example, a flat load embedded in mud will require extra pulling power to break the vacuum and may create a shock load
- Be sure there are no impediments in the way of the lift that could snag the load and increase the load on the block(s)
- Blocks used above or aloft should be attached with shackles
- Do Not side load or shock load blocks. When using snatch blocks, be sure that the block is closed properly before the load is applied
- Snatch blocks should not be used for hoisting: they should be used for fairleading only
- Do Not stand under the load or in the bight area. Do Not stand in the direct line of pull of any load
- Be sure the structural member to which the block is being attached is strong enough to support the load

Assure proper lubrication of the block. **Improper lubrication can lead to block failure.** Read and follow lubrication schedules.

Important Information

Block systems must be properly designed, used and maintained. A continual inspection program should be undertaken to discover gouges, distortion, cracks, elongation (or stretching), spread in the throat openings of hooks, severe wear or other damage. Any abuse, misuse or alteration may lessen the load a block system will sustain. Some examples of changes are as follows:

- Twisting or side loading
- Disfigurement
- Corrosion
- Shock loading
- Use for a purpose other than that for which a particular block was intended
- Use to carry a load in excess of the Working Load Limit

Blocks consist of one or more sheaves fitted in a wood or metal shell. Blocks are supported by a fitting attached to the strap of the block. These blocks are intended to be used in conjunction with other components in a load-sustaining system to gain mechanical advantage. Care should be taken to select components of compatible type, size and Working Load Limit.

Work Load Limits shown in CooperTools' literature are applicable to new blocks, or blocks in "as new" condition.

Selection of Blocks

To select a block to fit your requirements, the following must be considered:

1. Are there regulations that could affect the choice of blocks, such as federal, OSHA, state, maritime, etc.
2. What loads (weight) will be lifted? This must be known to select a block with an appropriate work load limit.
3. How many parts of line are required? (See "Method of Figuring," page 157.)
4. What is the size, type and working load limit of rope to be used? Consult a rope catalog to determine working load, rope strength and fatigue factors.
5. What is the speed of the line? This will help determine what type of bearing should be used.
6. Insure that the proper type of fitting is utilized. A block used above or aloft should be attached with shackles.
7. How will the block be reeved, and does it require a dead end becket? (See "Method of Reeving Manila and Wire Rope Blocks," page 157.)
8. What is the fleet angle of the wire line? Line entrance and exit angles should be no more than 90°. Use the bight angle factor (See page 156) to determine resultant load to properly determine Working Load Limit of your block.

Block Inspection and Maintenance

- Carefully examine the block(s) and rope(s) for wear and damage before each use
- Do not use a block if the sheaves do not turn freely. Sheaves must turn freely. Tight sheaves could indicate worn bushings or bearings
- Do not use a block with excessive play in the sheave. Check for excessive play in the sheave. Excessive play could indicate worn bushings or bearings
- Do not use a block with a loose becket bolt or rope splice. Check the becket bolt holding the dead end of the rope; the becket bolt should be tight. The rope splice on the becket should also be tight
- Do not use a block with worn or frayed rope. Check the condition of the rope for fraying
- Do not use a block with a damaged hook latch. Hooks on blocks should have a latch in proper operating condition. If the latch does not engage the tip of the hook, the hook could be sprung or opened due to an overload on a previous lift

Lubrication

The following represents the minimum recommended schedule for lubrication using medium viscosity lithium-based grease. Your own usage, including environmental factors and the frequency and type of use, may require lubrication that is more frequent.

SHEAVE BEARINGS

Tapered Rollers: Every 40 hours of continuous operation or every 30 days of intermittent operation.

Roller Type: Every 24 hours hours of continuous operation or every 14 hours of intermittent operation.

Bronze (Not self-lubricated): Every 8 hours of continuous operation or every 14 days of intermittent operation.

HOOK BEARINGS

Anti-Friction: Every 14 days for frequent swiveling or every 45 days for infrequent swiveling.

Bronze Thrust/No Bearings: Every 16 hours for frequent swiveling or every 21 days for infrequent swiveling.

ADVERTENCIA

- Antes de usar las pastecas, conozca el limite de carga de trabajo de los mismos.
NO EXCEEDA EL LIMITE DE CARGA DE TRABAJO.
- Las cargas de trabajo son las fuerzas resultantes de las cargas de trabajo.

WARNING

- Know the Working Load Limit of the block, or blocks, to be used.
DO NOT EXCEED THE WORKING LOAD LIMIT.
- Working Loads are Resultant Working Loads.

Load on Blocks

⚠ WARNING

- The Working Load Limit (WLL) is the maximum resultant load which should ever be applied to a block and its fittings. Blocks used to fairlead (single sheave and snatch blocks) can be subjected to a load greater than the weight being lifted or pulled.

Results of Applied Loads on Single Blocks

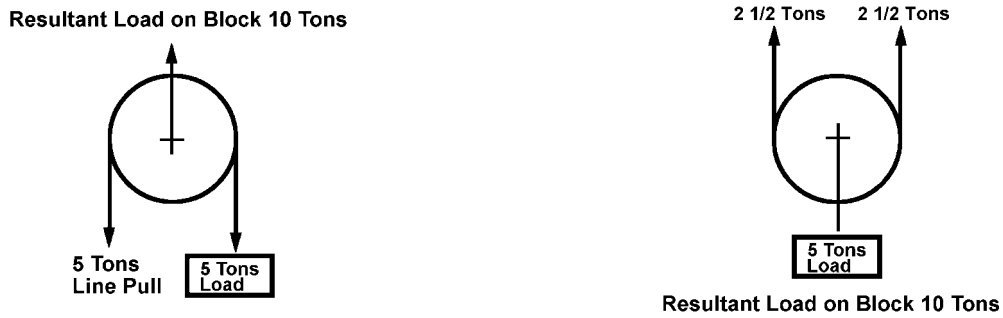


Figure No. 1

⚠ WARNING

- The total weight (load) on a single sheave block or snatch block varies with the bight angle between the incoming and outgoing line to the block (see Figure 2).

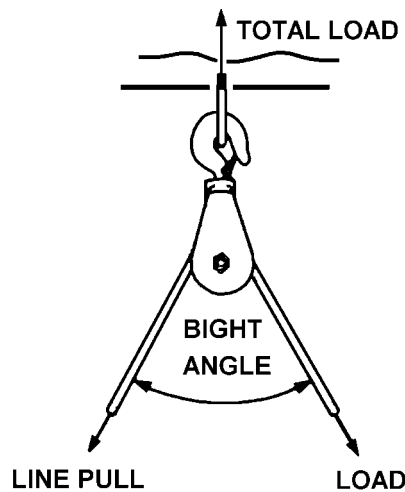


Figure No. 2

Load on Blocks (CONTINUED)

To determine this load:

1. Determine the bight angle of the line.
2. Refer to Table 1 for the corresponding angle factor.
3. Multiply the pull on the line or the weight of the load (line pull) by the angle factor to obtain the load on the block.

Bight Angle Factor

Angle	Factor	Angle	Factor
0°	2.00	100°	1.29
10°	1.99	110°	1.15
20°	1.97	120°	1.00
30°	1.93	130°	0.84
40°	1.87	135°	0.76
45°	1.84	140°	0.68
50°	1.81	150°	0.52
60°	1.73	160°	0.35
70°	1.64	170°	0.17
80°	1.53	180°	0.00
90°	1.41	—	—

Table 1

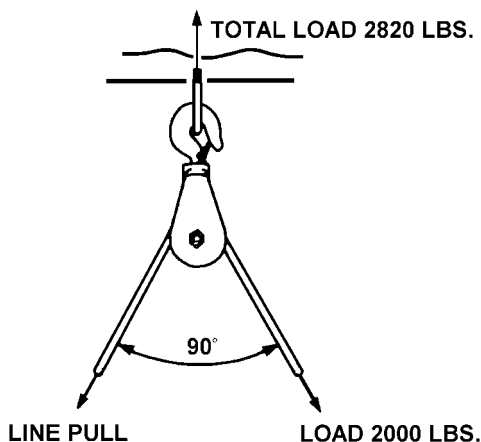
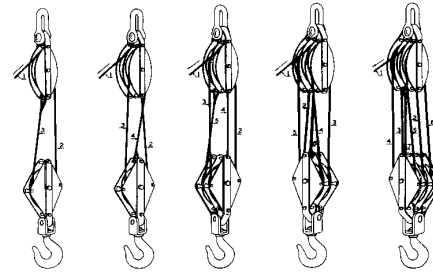


Figure No. 3

Method of Reeving Manila and Wire Rope Blocks

The method of reeving tackle blocks will vary with the applications. With heavy lift cargo booms, cranes and so forth, where blocks with four sheaves or more are required, a number of lead blocks have to be considered. The Campbell engineering department will be happy to assist on such applications.



The methods of reeving tackle blocks will vary with the applications.

Method of Figuring "Parts of Line"

$$\frac{L}{P} = E$$

L = Load lifted in pounds
P = Line pull in pounds
E = Efficiency factor

$$\frac{32,000 \text{ lb. (Load lifted "L")}}{6,000 \text{ lb. (Line pull "P")}} = 5.3 \text{ ("E")}$$

For example: To figure "Parts of Line" required when load lifted "L" and line pull "P" are known.

You can see in the table at the right that an "E" factor of 5.3 requires 6 "Parts of Line".

Parts of Line =		1	2	3	4	5	6	7	8	9	10	11	12
"E" Factors	Bronze Bushed	0.96	1.85	2.8	3.6	4.4	5.2	5.9	6.6	7.3	7.9	8.5	9.1
	Roller Bearing	0.98	1.9	2.9	3.8	4.7	5.6	6.5	7.3	8.2	9.0	9.8	10.6

Sheave, Bushing and Bearing Information

Anti-friction Bearings (tapered, needle and ball bearings) are for faster line speeds and more frequent use at greater loads (minimum bearing friction).

Iron Bushings (common bore) are very low speed lines and very infrequent use (high bearing friction).

Bronze Bushings (self lubricating bronze, graphite bronze and pressure lubrication bronze) are for slow line speeds.

Self-lubricating bronze and graphite bronze bushings are for infrequent use (moderate bearing friction). Pressure lubrication bronze bushings are for frequent use at greater loads (moderate bearing friction). The performance of bronze bushings is best determined by the "PV Factor" (maximum pressure velocity) at which the bearing is operating. This is the relationship between bearing pressure and bearing surface velocity. Brewer-Titchener™ bronze bushings have the following material properties:

- Maximum Bearing Pressure (BP): 4,500 pounds per square inch
- Maximum Bearing Velocity (BV): 1,200 feet per minute
- Maximum Pressure Velocity Factor (PV): 55,000
- (Due to material property relations, the maximum BP times the maximum BV is not equal to the maximum

To calculate Bearing Pressure (BP):

$$BP = \frac{\text{Line Pull} \times \text{Bight Angle Factor}}{\text{Shaft Diameter} \times \text{Hub Width}}$$

To calculate Bearing Velocity (BV):

$$BV = \frac{PV}{BP}$$

To calculate Line Speed:

$$\text{LINE SPEED} = \frac{BV (\text{Tread Diameter} + \text{Rope Diameter})}{\text{Shaft Diameter}}$$

These formulas can be used to determine the maximum allowable line speed for a given total sheave load. The maximum allowable line speed should be equal to or exceeding the required line speed. If the required line speed is greater than the calculated maximum allowable line speed, increase the shaft diameter and/or the hub width. For example:

Using a 12" diameter sheave (tread diameter = 10.25"; wire diameter = 0.75"; shaft diameter = 1.50"; hub width = 1.62"), a 5,000 lb. line pull and a 90° bight angle determine the allowable line speed.

$$BP = (5,000 \text{ lb.}) \times (1.41^*) / (1.50" \times 1.62") = 2,901 \text{ psi}$$

(line pull) (bight angle factor)/(shaft dia.) (hub width)

$$BV = (55,000 \text{ psi.}) / 2,901 = 19 \text{ FPM Allowable}$$

(PV factor) (BP)

$$\text{Line Speed} = 19 \times (10.25" + 0.75") / 1.50" = 139 \text{ FPM Allowable}$$

(BV) (tread dia. + rope dia.) (shaft dia.)

Testing of Blocks and Fittings for Commercial Marine Cargo Vessels

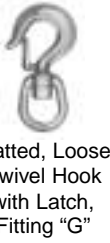
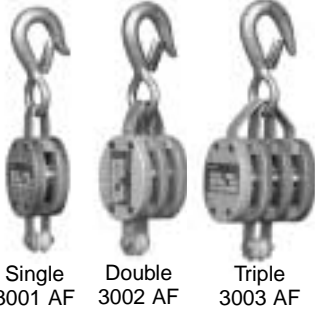
The Campbell plant has the facilities to proof test and certify blocks and fittings to meet the safety standards established by most maritime nations. Following are the proof tests required for maritime certification.

1. Shackles, hooks, links and swivels; proof tested to twice the working load limit.
2. Multiple-sheave blocks up to 20-ton (18, 144-Kgs.) working load limit; proof tested to twice the working load limit.
3. Multiple-sheave blocks with working load limits of 20-40 ton (18,144-36,288 Kgs.): proof tested to 20 ton (18, 144 Kgs.) in excess of the working load limit.
4. Multiple-sheave blocks with working load limits over 40 ton (36,288 Kgs.): proof tested to 1.5 times the working load limit.
5. Single blocks proof tested to 4 times the line pull.
6. Cargo hoisters (6001 Series): proof tested to 4 times the line pull shown in the catalog. All other single blocks proof tested to twice the work load shown in the catalog, and marked with a working load one half that shown in the catalog.

All blocks and fittings certified to maritime standards will be indelibly marked with working load, proof test and identifying number. All tests will be in long ton equal to 2,240 pounds (1,016 Kgs.)

NOTICE: The product specifications and dimensions are as accurate as possible at the time of printing. However, because we are constantly improving the quality and design of our products, they can change without notice.

Regular Wood Shell Blocks for Manila Rope



- Hard wood shells
- Drop forged fittings
- Available with bronze self-lubricating bushings
- Galvanized metal parts

Specifications														
Block Size	in.		mm		in.		mm		in.		mm		in.	
	3	76	4	102	5	127	6	152	8	203	10	254		
Diameter														
Rope	3/8	10	1/2	13	5/8	16	3/4	19	1	25	1 1/8	29		
Sheave Size														
O.D.	1 3/4	44	2 1/4	57	3	76	3 1/2	89	4 3/4	121	6 1/4	159		
Rim Thickness	1 1/2	13	5/8	16	3/4	19	1	25	1 1/8	29	1 1/4	32		
Center Pin Dia.	3/8	10	3/8	10	3/8	10	1/2	13	5/8	16	5/8	16		
Weight	lb		kg		lb		kg		lb		kg		lb	
Single	1	.4	2	1	2 1/2	1	4	2	9 1/2	4	17	8		
Double	1 1/2	1	3	1	4	2	6 1/2	3	13	6	25	11		
Triple	2	1	4	2	5 1/2	2	9	4	17	8	32	15		
Working Load Limit	lb		kg		lb		kg		lb		kg		lb	
Single	500	227	1000	454	1200	544	1800	816	2800	1270	4000	1814		
Double	800	363	1400	635	1800	816	2500	1134	3800	1724	6000	2722		
Triple	1200	544	1800	816	2400	1089	3200	1452	4800	2177	8000	3629		

Working Loads are Resultant Working Loads.

Block Size	Inch		mm		Inch		mm		Inch		mm		Inch	
	3	76	4	102	5	127	6	152	8	203	10	254		
Fittings	Cat. No.		UPC No. 020418		Cat. No.		UPC No. 020418		Cat. No.		UPC No. 020418		Cat. No.	
	Type	No.	No.	020418	No.	020418	No.	020418	No.	020418	No.	020418	No.	020418
Round Loose Hook "AF"														
Single	7205336	165894	7205436	165900	7205536	165917	7205636	165924	7205836	165931	-	-		
Double	7206836	165948	7206936	165955	7207036	165962	7207136	165979	7207336	165986	-	-		
Triple	7208436	165993	7208536	166006	7208636	166013	7208736	166020	7208936	166037	-	-		
Loose, Swivel Hook with Latch "G"														
Single	-	-	7205434	104282	7205534	104435	7205634	104589	-	-	-	-		
Double	-	-	7206934	105210	7207034	105364	7207134	105517	7207334	105685	-	-		
Triple	-	-	7208534	106118	7208634	106262	7208734	106415	-	-	-	-		
Screw Pin Anchor Shackle "K"														
Single	7205335	104145	7205435	104299	7205535	104442	7205635	104596	7205835	104794	7206035	104862		
Double	7206835	105074	7206935	105227	7207035	105371	7207135	105524	7207335	105692	7207535	105760		
Triple	7208435	105975	7208535	106125	7208635	106279	7208735	106422	7208935	106583	-	-		

⚠ ADVERTENCIA

- Antes de usar las pastecas, conozca el límite de carga de trabajo de los mismos.
NO EXCEEDA EL LIMITE DE CARGA DE TRABAJO.
- Las cargas de trabajo son las fuerzas resultantes de las cargas de trabajo.

⚠ WARNING

- Know the Working Load Limit of the block, or blocks, to be used.
DO NOT EXCEED THE WORKING LOAD LIMIT.
- Working Loads are Resultant Working Loads.

Painter's Staging Blocks

- Wood blocks
- Roller bushed
- For 3/4 in. manila rope
- Galvanized metal parts
- 6 in. shell; sheave size 3-1/2 OD x 1 in. rim x 1/2 in. pin



3001 J



3002 K

Fittings	Single with Becket		Double with Becket		Double without Becket	
	Cat. No.	UPC No.	Cat. No.	UPC No.	Cat. No.	UPC No.
Long, Loose Hook "J"	7209803	106767	7209815	167898	-	-
Latched, Long, Loose Hook "JS"	7209814	169939	7209813	167881	7209817	167911
Shackle "K"	-	-	-	-	7209819	167935

⚠ ADVERTENCIA

- Antes de usar las pastecas, conozca el limite de carga de trabajo de los mismos.
NO EXCEEDA EL LIMITE DE CARGA DE TRABAJO.
- Las cargas de trabajo son las fuerzas resultantes de las cargas de trabajo.

⚠ WARNING

- Know the Working Load Limit of the block, or blocks, to be used.
DO NOT EXCEED THE WORKING LOAD LIMIT.
- Working Loads are Resultant Working Loads.

Heavy Wood Shell Blocks for Fiber Rope



Single
3011 K



Double
3012 K



Triple
3013 K



Screw Pin
Anchor Shackle,
Fitting "K"

- These heavy, wide mortise wood blocks have cross bolted shells and drop forged fittings
- They have bronze self-lubricating bushings and galvanized metal parts

Specifications

Block Size	in.		mm		in.		mm	
	6	152	8	203	10	254	12	305
Diameter								
Rope	3/4	19	1 1/8	29	1 1/4	32	1 1/2	38
Sheave Size								
O.D.	3 1/2	89	4 1/2	114	6 1/4	159	8	203
Rim Thickness	1	25	1 3/8	35	1 1/2	38	1 5/8	41
Center Pin Dia.	1/2	13	5/8	16	3/4	19	3/4	19
Weight	lb		kg		lb		kg	
Single	5 1/2	2	12	5	23	10	31	14
Double	9	4	18	8	33	15	48	22
Triple	12	5	25	11	43	20	67	30
Working Load Limit	lb		kg		lb		kg	
Single	2000	907	3300	1497	5000	2268	6800	3084
Double	3300	1497	5100	2313	7700	3493	10,600	4808
Triple	4000	1814	7000	3175	10,000	4536	14,000	6350

Working Loads are Resultant Working Loads.

Block Size	Inch		mm		Inch		mm		
	6	152	8	203	10	254	12	305	
Fittings	Cat. No.		UPC No. 020418		Cat. No.		UPC No. 020418		
Type	Cat. No.		UPC No. 020418		Cat. No.		UPC No. 020418		
Screw Pin Anchor Shackle "K"									
Bronze SL	Single	7215635	106811	7215835	106842	7216035	106873	7216235	106903
Bushed,	Double	7217135	106941	7217335	106972	7217535	107009	7217335	107030
Galvanized	Triple	7218735	107078	7218935	107108	7219135	107139	7217735	107160

⚠️ ADVERTENCIA

- Antes de usar las pastecas, conozca el limite de carga de trabajo de los mismos.
NO EXCEEDA EL LIMITE DE CARGA DE TRABAJO.
- Las cargas de trabajo son las fuerzas resultantes de las cargas de trabajo.

⚠️ WARNING

- Know the Working Load Limit of the block, or blocks, to be used.
DO NOT EXCEED THE WORKING LOAD LIMIT.
- Working Loads are Resultant Working Loads.

Ideal Steel Blocks for Manila Rope

- Steel shells with drop forged flatted hooks
- Available painted
- Available with bronze self-lubricating bushings or iron bushed



Single
3031 F

Double
3032 F

Specifications												
Block Size	in.		mm		in.		mm		in.		mm	
		3	76	4	102	5	127	6	152	8	203	
Diameter												
Rope	3/8	10	1/2	13	5/8	16	3/4	19	1	25		
Sheave Size												
O.D.	1 3/4	44	2 1/4	57	3	76	3 1/2	89	4 3/4	121		
Rim Thickness	1/2	13	5/8	16	3/4	19	1	25	1 1/8	29		
Center Pin Dia.	3/8	10	3/8	10	3/8	10	1/2	13	5/8	16		
Weight												
	lb	kg	lb	kg	lb	kg	lb	kg	lb	kg		
Single	1	.4	2	1	2 1/2	1	3 1/2	2	8	4		
Double	1 1/2	1	3	1	3 1/2	2	5 1/2	3	11 1/2	5		
Triple	2	1	3 1/2	2	5	2	7	3	15	7		
Working Load Limit												
	lb	kg	lb	kg	lb	kg	lb	kg	lb	kg		
Single	300	136	500	227	700	318	1200	544	1800	816		
Double	400	181	600	272	900	408	1600	726	2500	1134		
Triple	600	272	900	408	1500	680	2000	907	3200	1452		

Working Loads are Resultant Working Loads.

Block Size		Inch	mm	Inch	mm	Inch	mm	Inch	mm	Inch	mm
		3	76	4	102	5	127	6	152	8	203
Fittings	Type	Cat. No.	UPC No. 020418	Cat. No.	UPC No. 020418	Cat. No.	UPC No. 020418	Cat. No.	UPC No. 020418	Cat. No.	UPC No. 020418
	Front Eye, Flatted, Loose Hook "F"										
Bronze SL	Single	7230333	168000	7230433	168024	7230533	168048	7230633	168062	7230833	168093
Bushed	Double	7231833	173073	7231933	173080	7232033	173097	7232133	168161	7232333	169229
Iron	Single	7230313	167997	7230413	168017	-	-	-	-	-	-
Bushed	Double	7231813	168109	7231913	170126	-	-	-	-	-	-

⚠ ADVERTENCIA

- Antes de usar las pastecas, conozca el limite de carga de trabajo de los mismos.
NO EXCEEDA EL LIMITE DE CARGA DE TRABAJO.
- Las cargas de trabajo son las fuerzas resultantes de las cargas de trabajo.

⚠ WARNING

- Know the Working Load Limit of the block, or blocks, to be used.
DO NOT EXCEED THE WORKING LOAD LIMIT.
- Working Loads are Resultant Working Loads.

B & L Star Metal Blocks for Manila or Fiber Rope



Single
3041 AF



Double
3042 AF



Flatted, Loose
Swivel Hook
with Latch,
Fitting "G"



Screw Pin
Anchor Shackle,
Fitting "K"

- Steel shells
- Available with bronze self-lubricating bushings
- Galvanized finish

Specifications												
Block Size	in.		mm		in.		mm		in.		mm	
	3	76	4	102	5	127	6	152	8	203		
Diameter												
Rope	3/8	10	1/2	13	5/8	16	3/4	19	1	25		
Sheave Size												
O.D.	1 3/4	44	2 1/4	57	3	76	3 1/2	89	4 3/4	121		
Rim Thickness	1/2	13	5/8	16	3/4	19	1	25	1 3/8	29		
Center Pin Dia.	3/8	10	3/8	10	3/8	10	1/2	13	5/8	16		
Weight	lb		kg		lb		kg		lb		kg	
Single	1 1/2	1	2 1/2	1	4	2	6	3	11	5		
Double	2	1	3 1/2	2	6	3	9 1/2	4	16 1/2	7		
Triple	2 1/2	1	4 1/2	2	8	4	12	5	23	10		
Working Load Limit	lb		kg		lb		kg		lb		kg	
Single	700	318	1100	499	1300	590	2000	907	3300	1497		
Double	1000	454	1600	726	2200	998	3300	1497	5100	2313		
Triple	1400	635	2200	998	3200	1452	4000	1814	7000	3175		

Working Loads are Resultant Working Loads.

Block Size	Inch		mm		Inch		mm		Inch		mm	
	3	76	4	102	5	127	6	152	8	203		
Fittings												
Type	Cat. No.	UPC No. 020418	Cat. No.	UPC No. 020418	Cat. No.	UPC No. 020418	Cat. No.	UPC No. 020418	Cat. No.	UPC No. 020418		
Round Loose Hook "AF"												
Bronze SL	Single	7245335	171734	7245435	171765	7245535	171796	7245635	171826	7245835	171840	
Bushed,	Double	7246835	171871	7246935	171901	7247035	171932	7247135	171963	7247335	171987	
Galvanized	Triple	▽ 7248435	172014	7248535	172045	-	-	▽ 7248735	172106	7248935	172120	
Flatted, Loose, Swivel Hook with latch "G"												
Bronze SL	Single	7245334	109034	7245434	109188	7245534	109331	-	-	-	-	
Bushed,	Double	-	-	7246934	110047	-	-	7247134	110351	-	-	
Galvanized	Double	-	-	7248534	110931	-	-	-	-	-	-	
Screw Pin Anchor Shackle "K"												
Bronze SL	Single	7245336	109041	7245436	109195	7245536	109348	7245636	109492	7245836	109638	
Bushed,	Double	-	-	7246934	110047	-	-	7247134	110351	-	-	
Galvanized	Double	-	-	7248534	110931	-	-	-	-	-	-	

Note: ▽ These items are made to order

⚠ ADVERTENCIA

- Antes de usar las pastecas, conozca el límite de carga de trabajo de los mismos.
NO EXCEEDA EL LÍMITE DE CARGA DE TRABAJO.
- Las cargas de trabajo son las fuerzas resultantes de las cargas de trabajo.

⚠ WARNING

- Know the Working Load Limit of the block, or blocks, to be used.
DO NOT EXCEED THE WORKING LOAD LIMIT.
- Working Loads are Resultant Working Loads.

Gin or Roofer's Block for Manila Rope

Specifications		
Block Size	Inch	mm
	12	305
Diameter Rope	1	25
	Sheave Size	
O.D.	12	305
Rim Thickness	1 ³ / ₈	35
Center Pin Dia.	5 ⁵ / ₈	16
Weight	lb	kg
	13	6
Working Load Limit *	lb	kg
	1000	454

Working Loads are Resultant Working Loads.

	Cat. No.	UPC No.
Block	7269812	115387

***Warning:** Do not exceed Working Load Limit. Lift should not exceed 500 pounds.

- This block is furnished with a drop forged, flatted, swivel hook with latch
- Roller bushing; painted finish



3061V

Star Safety Tackle Blocks for Manila Rope

Specifications				
Block Size	Inch	mm	Inch	mm
	2	51	4	102
Diameter Rope	3 ³ / ₈ - 1 ¹ / ₂	10 - 13	5 ⁵ / ₈ - 3 ³ / ₄	16 - 19
	Weight			
	lb	kg	lb	kg
	8	4	25	11
Working Load Limit *	lb	kg	lb	kg
	1000	454	2800	1270
Pounds One Person Can Lift				
	400	182	600	272

Working Loads are Resultant Working Loads.

Block	Inch	mm	Inch	mm
	2	51	4	102
Cat. No.	UPC No.	Cat. No.	UPC No.	
7269802	115349	7269802	115349	

- Steel shells with drop-forged fittings
- Self-lubricating bushings with a painted finish
- Used for vertical lifting only
- Rope not included



3062

⚠ ADVERTENCIA

- Antes de usar las pastecas, conozca el limite de carga de trabajo de los mismos.
NO EXCEEDA EL LIMITE DE CARGA DE TRABAJO.
- Las cargas de trabajo son las fuerzas resultantes de las cargas de trabajo.

⚠ WARNING

- Know the Working Load Limit of the block, or blocks, to be used.
DO NOT EXCEED THE WORKING LOAD LIMIT.
- Working Loads are Resultant Working Loads.

Drop Link, Manila Rope Snatch Blocks



Wood,
3071 V



Steel,
3073 V



Stiff Swivel Hook
with Latch,
Fitting "V"

- Shells from wood or steel
- Cross-bolted shell
- Fittings drop forged; metal parts galvanized
- Available with bronze self-lubricating bushing
- Drop link snatch blocks are primarily used as lead blocks; not recommended for hoisting

Specifications

Block Size	in.		mm		in.		mm	
	4	102	6	152	8	203	10	254
Diameter								
Rope	3/4	19	7/8	22	1	25	1 1/4	32
Sheave Size								
O.D.	2	51	3	76	4 1/2	114	5 3/4	146
Rim Thickness	7/8	22	1 1/8	29	1 3/8	35	1 7/8	48
Bearing Diameter	5/8	16	3/4	19	7/8	22	1	25
Center Pin Dia.	3/8	10	1/2	13	5/8	16	3/4	19
Weight								
	lb	kg	lb	kg	lb	kg	lb	kg
Wood, 3071	2	1	9	4	12 1/2	6	23	10
Steel, 3073	2	1	6	3	13	6	23	10
Working Load Limit								
	lb	kg	lb	kg	lb	kg	lb	kg
	750	340	2400	1089	4800	2177	6600	2994

Working Loads are Resultant Working Loads.

Block Size	Inch		mm		Inch		mm		Inch		mm	
	4	102	6	152	8	203	10	254				
Fittings												
Type	Cat. No.	UPC No. 020418	Cat. No.	UPC No. 020418	Cat. No.	UPC No. 020418	Cat. No.	UPC No. 020418	Cat. No.	UPC No. 020418	Cat. No.	UPC No. 020418
Stiff Swivel Hook with Latch "V"												
Bronze Bushed, Galvanized	Wood, 3071	7265486	112881	7265686	113130	7265886	113420	7266086	113710			
Bronze Bushed, Galvanized	Steel, 3073	7265496	112911	7265696	113192	7265896	113482	7266096	113772			
Bronze Bushed, Pressure	Wood, 3071	-	-	7265616	182877	7265816	166778	7266016	166815			
Greased Lug, Galvanized	Steel, 3073	-	-	7265626	182884	7265826	166785	7266026	166839			

⚠ ADVERTENCIA

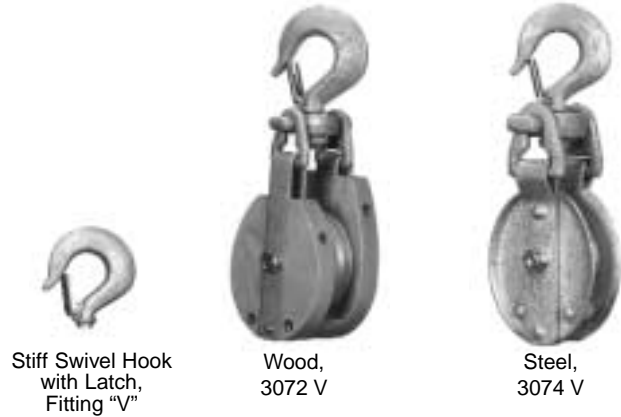
- Antes de usar las pastecas, conozca el limite de carga de trabajo de los mismos.
NO EXCEEDA EL LIMITE DE CARGA DE TRABAJO.
- Las cargas de trabajo son las fuerzas resultantes de las cargas de trabajo.

⚠ WARNING

- Know the Working Load Limit of the block, or blocks, to be used.
DO NOT EXCEED THE WORKING LOAD LIMIT.
- Working Loads are Resultant Working Loads.

Safety Locking, Manila Rope Snatch Blocks

- Wood or steel shells
- Roller or bronze self-lubricated bushings
- Drop forged fittings
- Painted or galvanized fittings



Specifications										
Block Size	in.		mm		in.		mm		in.	
	4	102	6	152	8	203	10	254		
Diameter										
Rope	3/4	19	7/8	22	1	25	1 1/4	32		
Sheave Size										
O.D.	2	51	3	76	4 1/2	114	5 3/4	146		
Rim Thickness	7/8	22	1 1/8	29	1 3/8	35	1 7/8	48		
Bearing Diameter	5/8	16	3/4	19	7/8	22	1	25		
Center Pin Dia.	3/8	10	1/2	13	5/8	16	3/4	19		
Weight	lb		kg		lb		kg		lb	
Wood, 3072	2	1	9	4	12 1/2	6	23	10		
Steel, 3074	2 1/2	1	6	3	13	6	23	10		
Working Load Limit	lb		kg		lb		kg		lb	
	800	363	3000	1361	5000	2268	8000	3629		

Working Loads are Resultant Working Loads.

Block Size	Inch		mm		Inch		mm		Inch		mm	
	4	102	6	152	8	203	10	254				
Fittings	Cat. No.		UPC No. 020418		Cat. No.		UPC No. 020418		Cat. No.		UPC No. 020418	
Stiff Swivel Hook with Latch "V"												
Bronze Bushed, Galv. SL	Wood, 3072	7266986	114120	7267186	114250	7267386	114410	-	-			
Bronze Bushed, Galv. SL	Steel, 3074	7266996	114151	7267196	114311	7267396	114472	7267596	114625			

SL stands for self-lubricating bushings

⚠ ADVERTENCIA

- Antes de usar las pastecas, conozca el limite de carga de trabajo de los mismos.
NO EXCEEDA EL LIMITE DE CARGA DE TRABAJO.
- Las cargas de trabajo son las fuerzas resultantes de las cargas de trabajo.

⚠ WARNING

- Know the Working Load Limit of the block, or blocks, to be used.
DO NOT EXCEED THE WORKING LOAD LIMIT.
- Working Loads are Resultant Working Loads.

Nylon Blocks for Manila Rope



Single
3101 F



Double
3102 F



Triple
3103 F

- Nylon shells and sheaves
- Fittings are drop forged
- Plated strap and connections

Specifications			
Block Size	Inch	mm	
	2	51	
Diameter Rope	$\frac{3}{8}$ - $\frac{1}{2}$	10 - 13	
	Sheave Size		
O.D.	2	51	
Rim Thickness	$\frac{5}{8}$	16	
Center Pin Diameter	$\frac{3}{8}$	10	
Weight	lb	kg	
	Single	7	3
	Double	12	5
	Triple	16	7
Working Load Limit *	lb	kg	
	Single	500	227
	Double	1000	454
	Triple	1200	544

Working Loads are Resultant Working Loads.

Fittings		
Type	Cat. No.	UPC No.
Loose, Hook with Latch "F"		
Single	7220213	107269
Double	7222213	107320
Triple	7223213	107375
Loose, Swivel Hook with Latch "G"		
Single	7220214	107276
Double	7222214	107337
Triple	7223214	107382
Screw Pin Anchor Shackle "K"		
Single	7220215	107283
Double	7222215	107344

⚠ ADVERTENCIA

- Antes de usar las pastecas, conozca el límite de carga de trabajo de los mismos.
NO EXCEEDA EL LIMITE DE CARGA DE TRABAJO.
- Las cargas de trabajo son las fuerzas resultantes de las cargas de trabajo.

⚠ WARNING

- Know the Working Load Limit of the block, or blocks, to be used.
DO NOT EXCEED THE WORKING LOAD LIMIT.
- Working Loads are Resultant Working Loads.

Eastern, Manila Rope Snatch Blocks

- These safety or positive locking blocks are available in sizes from 6 in. to 12 in.
- All fittings are drop forged
- Galvanized



Safety Locking
3075 V

Specifications								
Block Size	in.	mm	in.	mm	in.	mm	in.	mm
	6	152	8	203	10	254	12	305
Diameter								
Rope	7/8	22	1	25	1 1/4	32	1 1/2	38
Sheave Size								
O.D.	3	76	4 1/2	114	5 3/4	146	6 3/4	171
Rim Thickness	1 1/8	29	1 3/8	35	1 7/8	48	2 1/8	54
Bearing Diameter	3/4	19	7/8	22	1	25	1	25
Center Pin Dia.	1/2	13	5/8	16	3/4	19	3/4	19
Weight								
	lb	kg	lb	kg	lb	kg	lb	kg
Steel, Galvanized, 3075	9	4	17	8	33	15	45	20
Working Load Limit								
	lb	kg	lb	kg	lb	kg	lb	kg
	3000	1361	5000	2246	8000	3629	10000	4536

Working Loads are Resultant Working Loads.

Block Size	Inch	mm	Inch	mm	Inch	mm	Inch	mm	
	6	152	8	203	10	254	12	305	
Fittings	Cat. No.	UPC No. 020418	Cat. No.	UPC No. 020418	Cat. No.	UPC No. 020418	Cat. No.	UPC No. 020418	
Type									
Stiff Swivel Hook with Latch "V"									
Bronze Bushed, Galv. SL	Safety, 3075	7268796	115004	7268996	115080	7269196	115165	7269396	115226

Note: SL stands for self-lubricating bushings.

⚠ ADVERTENCIA

- Antes de usar las pastecas, conozca el limite de carga de trabajo de los mismos.
NO EXCEEDA EL LIMITE DE CARGA DE TRABAJO.
- Las cargas de trabajo son las fuerzas resultantes de las cargas de trabajo.

⚠ WARNING

- Know the Working Load Limit of the block, or blocks, to be used.
DO NOT EXCEED THE WORKING LOAD LIMIT.
- Working Loads are Resultant Working Loads.

Regular Diamond & Oval Wire Rope Blocks



Single
4011 L



Double
4012 L



4001



Stiff Swivel Hook
with Latch,
Fitting "V"



Round Pin
Chain Shackle.
Fitting "L"

- Steel shells with steel or iron sheaves
- Drop forged fittings
- Bronze self-lubricating bushings or grooved bronze bushings with pressure grease lubrication
- Available painted or galvanized

Specifications

Block Size	in.		mm		in.		mm	
	4	102	6	152	8	203		
Diameter								
Rope	3/8	10	3/8 - 1/2	10 - 13	1/2 - 5/8	13 - 16		
Sheave Size								
O.D.	4	102	6	152	8	203		
Rim Thickness	3/4	19	1	25	1 1/4	32		
Center Pin Dia.	1/2	13	3/4	19	7/8	22		
Weight								
	lb	kg	lb	kg	lb	kg		
Single	8	4	16	7	26	12		
Double	11	5	24	11	38	17		
Triple	14	6	32	15	55	25		
Working Load Limit								
	ton	kg	ton	kg	ton	kg		
Single	1	907	2	1814	2 1/2	2268		
Double	1 1/2	1361	2 1/2	2268	3 1/2	3175		
Triple	2	1814	3	2722	4 1/2	4082		

Working Loads are Resultant Working Loads.

Block Size	Inch	mm	Inch	mm	Inch	mm
	4	102	6	152	8	203
Fittings						
Type	Cat. No.	UPC No. 020418	Cat. No.	UPC No. 020418	Cat. No.	UPC No. 020418
Swivel Hook with Latch "V". Self-lube bronze bushings						
Bronze SL Diamond Bushings,						
Steel Sheaves, Painted	Single	7280429	116797	7280629	116858	7280829 116919
Round Pin Chain Shackle "L". Self-lube bronze bushings						
Bronze SL Diamond Bushings,						
Steel Sheaves, Painted	Single	7280424	116780	7280624	116841	7280824 116902
Galvanized Regular Oval Wire Rope Blocks, Fitting "L"						
4011 Oval, Iron Sheaves	Single	7275434	116414	7275634	116476	7275834 116513
4012 Oval, Iron Sheaves	Double	7276934	116575	7277134	116612	7277344 116667

⚠️ ADVERTENCIA

- Antes de usar las pastecas, conozca el límite de carga de trabajo de los mismos.
NO EXCEEDA EL LÍMITE DE CARGA DE TRABAJO.
- Las cargas de trabajo son las fuerzas resultantes de las cargas de trabajo.

⚠️ WARNING

- Know the Working Load Limit of the block, or blocks, to be used.
DO NOT EXCEED THE WORKING LOAD LIMIT.
- Working Loads are Resultant Working Loads.

Extra Heavy Oval Wire Rope Blocks

- Steel blocks with steel sheaves
- Drop forged fittings
- Grooved bronze bushings with pressure greased lubrication
- Available galvanized



Bolt Type Chain Shackle. Fitting "N"



Oval Triple 4033 N

Specifications				
Block Size	in.		mm	
	6	8	152	203
Diameter				
Rope	3/8 - 1/2	10 - 13	1/2 - 5/8	13 - 16
Sheave Size				
O.D.	6	8	152	203
Rim Thickness	1	1 1/4	25	32
Center Pin Dia.	3/4	7/8	19	22
Weight	lb	kg	lb	kg
Single	16	7	28	13
Double	27	12	52	24
Triple	48	22	75	34
Working Load Limit	ton	kg	ton	kg
Single	2 1/2	2268	3 1/2	3175
Double	3	2722	6	5443
Triple	4	3629	7	6350

Working Loads are Resultant Working Loads.

Block Size	Inch		mm	
	6	8	152	203
Fittings	Cat. No.	UPC No.	Cat. No.	UPC No.
Type		020418		020418
Bolt Type Chain Shackle "N". Galvanized, Pressure Grease Lubricated, Bronze Bushings.				
	Single	7300328	118128	7300528 118197
Steel Sheaves, Oval	Double	7301828	118517	7302028 118586
	Triple	7303428	118906	▽ 7303628 118968

Note: ▽ These items are made to order.

⚠ ADVERTENCIA

- Antes de usar las pastecas, conozca el limite de carga de trabajo de los mismos.
NO EXCEEDA EL LIMITE DE CARGA DE TRABAJO.
- Las cargas de trabajo son las fuerzas resultantes de las cargas de trabajo.

⚠ WARNING

- Know the Working Load Limit of the block, or blocks, to be used.
DO NOT EXCEED THE WORKING LOAD LIMIT.
- Working Loads are Resultant Working Loads.

Steel Plate Snatch Blocks for Wire Rope



Locking
4084 V



Drop Link
4083 V



Stiff Swivel Hook
with Latch,
Fitting "V"



Oblong
Swivel Eye,
Fitting "T"

- Steel shells with steel or iron sheaves
- Drop forged fittings
- Bronze, self-lubricating bushings
- Drop link snatch blocks are primarily used as lead blocks; not recommended for hoisting

Specifications

Block Size	in.		mm		in.		mm	
	4	6	102	152	8	10	203	254
Diameter								
Rope	3/8	3/8 - 1/2	10	10 - 13	1/2 - 5/8	13 - 16	5/8	16
Sheave Size								
O.D.	4	6	102	152	8	10	203	254
Rim Thickness	3/4	1	19	25	1 1/4	1 1/4	32	32
Bearing Diameter	3/4	1	19	25	1 1/8	1 1/4	29	32
Center Pin Dia.	1/4	3/4	13	19	7/8	1	22	25
Weight								
	lb	kg	lb	kg	lb	kg	lb	kg
Drop Link	6	3	14	6	26 1/2	12	38	17
Locking	6	3	16	7	28	13	49	22
Working Load Limit *								
	ton	kg	ton	kg	ton	kg	ton	kg
	1	907	2	1814	3	2722	4	3629

* **Warning:** Do not exceed Working Load Limit

Working Loads are Resultant Working Loads.

Block Size	Inch		mm		Inch		mm		Inch		mm	
	4	6	102	152	8	10	203	254	10	254		
Fittings												
Type	Cat. No.	UPC No.	Cat. No.	UPC No.	Cat. No.	UPC No.	Cat. No.	UPC No.	Cat. No.	UPC No.		
Stiff Swivel Hook with Latch "V". Self-lube Bronze Bushings.												
Iron Sheaves, Drop Link	7321519	120886	7321719	120930	7321919	120985	7322119	121029	7322119	121029		
Painted Locking	7323219	121210	7323419	121333	7323619	121456	7323819	121579	7323819	121579		
Steel Sheaves, Painted Locking	7323229	121272	7323429	121395	7323629	121517	-	-	-	-		
Oblong Swivel Eye "T". Self-lube Bronze Bushings.												
Iron Sheaves Galv. locking	7328217	122309	7328417	122422	7328617	122545	-	-	-	-		

⚠ ADVERTENCIA

- Antes de usar las pastecas, conozca el límite de carga de trabajo de los mismos.
NO EXCEEDA EL LIMITE DE CARGA DE TRABAJO.
- Las cargas de trabajo son las fuerzas resultantes de las cargas de trabajo.

⚠ WARNING

- Know the Working Load Limit of the block, or blocks, to be used.
DO NOT EXCEED THE WORKING LOAD LIMIT.
- Working Loads are Resultant Working Loads.

Team Snatch Blocks for Wire Rope

Specifications						
Diameter Rope	in.		mm		mm	
		5/8	16	3/4	19	7/8
Sheave Size						
O.D.	6	152	8	203	10	254
Rim Thickness	1 1/4	32	1 1/2	38	1 1/2	38
Bearing Diameter	1 1/4	32	1 1/2	38	2	51
Center Pin Diameter	1	25	1 1/4	32	1 1/2	38
Weight	lb		kg		kg	
	34	15	50	23	76	35
Working Load Limit	ton		kg		kg	
	7	6350	10	9072	12	10886

Working Loads are Resultant Working Loads.

Fittings	Cat. No.	UPC No.	Cat. No.	UPC No.	Cat. No.	UPC No.
	7329919	123221	7329921	123238	7329923	123245



4091V

- Steel shells with steel sheaves
- Drop forged fittings
- Bronze, self-lubricating bushings
- Painted finish

Heavy Duty, All Purpose Snatch Blocks for Wire Rope

Specifications				
Block Size	in.		mm	
		6	152	8
Diameter Rope	1/2 - 1 1/8	13 - 38	5/8 - 1 1/4	16 - 32
Sheave Size				
O.D.	6	152	8	203
Rim Thickness	1 1/2	38	1 1/2	38
Bearing Diameter	1 3/4	44	2 1/4	57
Center Pin Diameter	1 1/4	32	1 3/4	44
Weight	lb		kg	
	40	18	72	33
Working Load Limit	ton		kg	
	10	9072	12	10886

Working Loads are Resultant Working Loads.

Block Size	Inch	mm	Inch	mm
	6	152	8	203
Fittings	Cat. No.	UPC No.	Cat. No.	UPC No.
Type		020418		020418
4101 with Painted Finish				
	Fitting V	7330649	123504	7330849
				123528



4101V

- Steel shells with steel sheaves
- Drop forged fittings
- Available painted
- Features a steel sleeve over a steel pin for increased strength and durability
- Have a combination score suitable for a variety of sizes of wire rope

⚠ ADVERTENCIA

- Antes de usar las pastecas, conozca el limite de carga de trabajo de los mismos.
NO EXCEEDA EL LIMITE DE CARGA DE TRABAJO.
- Las cargas de trabajo son las fuerzas resultantes de las cargas de trabajo.

⚠ WARNING

- Know the Working Load Limit of the block, or blocks, to be used.
DO NOT EXCEED THE WORKING LOAD LIMIT.
- Working Loads are Resultant Working Loads.

Extra Heavy, Eastern Pattern Snatch Blocks



4102V

- Steel shells with steel sheaves
- Drop forged fittings
- Bronze self-lubricating bushings
- Features steel sleeve over sheave pin which increases strength and durability
- Combination score to handle variety of sizes of wire and manila rope

Specifications

Block Size	in.		mm		in.		mm	
	6	8	152	203	10	254		
Diameter	Manila	7/8	22	1	25	1 1/4	32	
Rope	Wire	3/8	10	1/2	13	5/8	16	
Sheave Size								
O.D.	3	4 1/2	76	114	5 3/4	146		
Rim Thickness	1 1/8	1 3/8	29	35	1 7/8	48		
Bearing Diameter	1	1 1/4	25	32	1 3/8	35		
Center Pin Diameter	1/2	5/8	13	16	3/4	19		
Weight								
	lb	kg	lb	kg	lb	kg		
	10	5	19	9	36	16		
Working Load Limit *								
	ton	kg	ton	kg	ton	kg		
	2	1814	3	2722	5	4536		

* Warning: Do not exceed Working Load Limit

Working Loads are Resultant Working Loads.

Block Size	Inch		mm		Inch		mm	
	6	8	152	203	10	254		
Fittings	Cat. No.	UPC No.	Cat. No.	UPC No.	Cat. No.	UPC No.		
		020418		020418		020418		
4102 with Galvanized Finish								
Fitting V	7332234	123849	7336824	123900	7337024	123962		

⚠ ADVERTENCIA

- Antes de usar las pastecas, conozca el limite de carga de trabajo de los mismos.
NO EXCEEDA EL LIMITE DE CARGA DE TRABAJO.
- Las cargas de trabajo son las fuerzas resultantes de las cargas de trabajo.

⚠ WARNING

- Know the Working Load Limit of the block, or blocks, to be used.
DO NOT EXCEED THE WORKING LOAD LIMIT.
- Working Loads are Resultant Working Loads.

Drop Side Snatch Blocks

- Steel shells with steel sheaves
- Drop forged fittings
- Galvanized
- For wire or manila rope
- 3 in. and 4½ in. blocks have bronze self-lubricating bushings; 6 in. and larger blocks have grooved bronze bushings with pressure greased lubrication
- Special feature: the bolt cannot be lost when the block is opened; connections are easily interchangeable



4099 H



4099 Q

Specifications												
Block Size	in.		mm		in.		mm		in.		mm	
		3	76	4½	114	6	152	8	203			
Diameter	Manila	-	-	1	25	1½	38	-	-			
Rope	Wire	¾	10	½	13	¾	19	¾	19			
Sheave Size												
O.D.	3	76	4½	114	6	152	8	203				
Center Pin Dia.	¾	19	1	25	1½	38	1½	38				
Weight												
	lb	kg	lb	kg	lb	kg	lb	kg				
w/Connection	5	2	12	5	26	12	34	15				
w/o Connection	3	1	6	3	15	7	22	10				
Working Load Limit												
	ton	kg	ton	kg	ton	kg	ton	kg				
	2	1814	4	3629	8	7258	8	7258				

Working Loads are Resultant Working Loads.

Fittings	H		V		Q		T		NC		BS	
	Cat. No.	UPC No. 020418	Cat. No.	UPC No. 020418	Cat. No.	UPC No. 020418	Cat. No.	UPC No. 020418	Cat. No.	UPC No. 020418	Cat. No.	UPC No. 020418
Wire												
3" Self-lube	7339750	124716	7339754	124754	7339752	124730	7339753	124747	7339755	124761	7332500	170317
3 1/2" Bronze	7339760	124778	7339764	124815	7339762	124792	7339763	124808	7339765	124822	7332510	170324
6" Bronze PL	7339790	124952	7339794	124990	7339792	124976	7339793	124983	7339795	125003	7332520	170331
8" Bronze PL	7339830	125188	7339834	125218	7339832	125195	7339833	125201	7339835	125225	-	-

Note: ▽ These items are made to order.

Connection Types

- | | |
|--------------------------------|-------------------------|
| "H" - Hook, no latch | "T" - Oblong swivel eye |
| "V" - Hook, with latch | "NC" - No connection |
| "Q" - Screw pin anchor shackle | "BS" - Bullard style |

ADVERTENCIA

- Antes de usar las pastecas, conozca el limite de carga de trabajo de los mismos.
NO EXCEEDA EL LIMITE DE CARGA DE TRABAJO.
- Las cargas de trabajo son las fuerzas resultantes de las cargas de trabajo.

WARNING

- Know the Working Load Limit of the block, or blocks, to be used.
DO NOT EXCEED THE WORKING LOAD LIMIT.
- Working Loads are Resultant Working Loads.

Heavy Construction Blocks with Shackles



Single
6731 Oval



Double
6732 Oval

- Oval shell
- Available single, double, and triple
- Steel sheaves, galvanized

Specifications

Block Size	in.		mm		in.		mm	
	10	12	254	305	14	12	356	305
Diameter	3/4		19		3/4		19	
Rope	3/4		19		3/4		19	
Weight	lb	kg	lb	kg	lb	kg	lb	kg
Single	94	43	118	54	131	59		
Double	112	51	157	71	205	93		
Triple	148	67	197	89	275	125		
Quad.	191	87	276	125	355	161		
Working Load Limit	ton		kg		ton		kg	
Single	10	9072	10	9072	10	9072		
Double	15	13608	15	13608	20	18144		
Triple	20	18144	20	18144	30	27216		
Quad.	25	22680	25	22680	40	36288		

Working Loads are Resultant Working Loads.
Ultimate load is four times Working Load Limit.

Block Size	Inch		mm		Inch		mm	
	10	12	254	305	14	12	356	305
Fittings	Type		Cat. No.	UPC No. 020418	Cat. No.	UPC No. 020418	Cat. No.	UPC No. 020418
Bronze PL Bushed, Oval								
6731	Single	▽ 7422113	131875	▽ 7422114	131882	▽ 7422115	131899	
6732	Double	▽ 7422213	132018	▽ 7422214	132025	▽ 7422215	132032	
6733	Triple	▽ 7422313	132155	▽ 7422314	132162	▽ 7422315	132179	

Note: ▽ These items are made to order.

⚠ ADVERTENCIA

- Antes de usar las pastecas, conozca el límite de carga de trabajo de los mismos.
NO EXCEEDA EL LÍMITE DE CARGA DE TRABAJO.
- Las cargas de trabajo son las fuerzas resultantes de las cargas de trabajo.

⚠ WARNING

- Know the Working Load Limit of the block, or blocks, to be used.
DO NOT EXCEED THE WORKING LOAD LIMIT.
- Working Loads are Resultant Working Loads.

Iron Sheaves for Manila Rope

Specifications									
Outside Diameter		Rim Width		Pin Diameter		Maximum Fiber		Bronze Bushed Self-lube	
in.	mm	in.	mm	in.	mm	in.	mm	Cat. No.	UPC No. 020418
1 3/4	44	1/2	13	3/8	10	3/8	10	7344032	126475
2 1/4	57	5/8	16	3/8	10	1/2	13	7344132	126482
3	76	3/4	19	3/8	10	5/8	16	7344232	126505
3 1/2	89	1	25	1/2	13	3/4	19	7344432	126536
4 1/2	114	1 3/8	35	5/8	16	1 1/8	29	7344732	126567
4 3/4	121	1 1/8	29	5/8	16	1	25	7344832	126581
6 1/4	159	1 1/2	38	3/4	19	1 1/4	32	7345132	126628

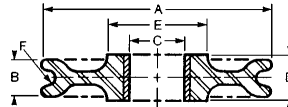


4213

- Cast iron sheaves
- Available with bronze self-lubricating bushings
- Galvanized

Extra Heavy, Iron Sheaves for Wire Rope

- Cast iron sheaves
- Available with iron bushing or bronze self-lubricating bushing
- Painted or galvanized finish



4231

Specifications																	
"A" Outside Diameter		"B" Rim Width		"C" Pin Diameter		"D" Hub Width		"E" Hub Diameter		"F" Maximum Wire Rope		Iron Bushed		Bronze Bushed Self-lube			
in.	mm	in.	mm	in.	mm	in.	mm	in.	mm	in.	mm	Weight lb	Weight kg	Cat. No.	UPC No. 020418	Cat. No.	UPC No. 020418
3	76	1/2	13	3/8	10	9/16	14	1 1/8	29	1/4	6	5/8	0.28	7350122	128826	7360122	127649
3	76	3/4	19	1/2	13	13/16	21	1 1/8	29	1/4	6	3/4	0.34	▽ 7350332	126875	-	-
3	76	3/4	19	3/8	10	13/16	21	1 1/8	29	3/8	10	3/4	0.34	7350222	126833	7360222	127656
4	102	5/8	16	1/2	13	11/16	17	1 1/2	38	1/4	6	1 1/4	0.57	7350422	126864	7360422	127687
4	102	3/4	19	1/2	13	13/16	21	1 1/2	38	3/8	10	1 1/2	0.68	7350522	126871	7360522	127694
4	102	3/4	19	3/4	19	13/16	21	1 1/2	38	3/8	10	1 1/2	0.68	7355522	127373	7365522	128363
4	102	1	25	1/2	13	1 1/16	27	2	51	1/2	13	2 1/2	1.13	7350622	127373	7360622	128363
4	102	1	25	3/4	19	1 1/16	27	2	51	1/2	13	2 1/2	1.13	7355622	127380	7365622	128370
5	127	1	25	3/4	19	1 1/16	27	2 1/8	54	1/2	13	3	1.36	7350922	126925	7360922	127755
6	152	3/4	19	5/8	16	13/16	21	2 1/8	54	3/8	10	3	1.36	7351022	126932	7361022	127762
6	152	1	25	3/4	19	1 1/16	27	2 1/4	57	3/8	10	4 3/4	2.15	-	-	7361234	127809
6	152	1	25	1	25	1 1/16	27	2 1/4	57	3/8	10	4 3/4	2.15	-	-	7361432	127854
6	152	1	25	5/8	16	1 1/16	27	2 1/8	54	1/2	13	4 1/2	2.04	7351122	126949	-	-
6	152	1	25	3/4	19	1 1/16	27	2 1/8	54	1/2	13	4 1/2	2.04	-	-	7361222	127786
6	152	1	25	3/4	19	1 1/16	27	2 1/8	54	1/2	13	4 1/2	2.04	-	-	7361222	127786
6	152	1	25	1	25	1 1/16	27	2 1/8	54	1/2	13	4 1/2	2.04	-	-	7361422	127847
6	152	1	25	1 1/4	32	1 1/16	27	2 1/4	57	1/2	13	4 1/2	2.04	-	-	7361522	127861

Note: ▽ These items are made to order.

⚠ ADVERTENCIA

- Antes de usar las pastecas, conozca el limite de carga de trabajo de los mismos.
NO EXCEEDA EL LIMITE DE CARGA DE TRABAJO.
- Las cargas de trabajo son las fuerzas resultantes de las cargas de trabajo.

⚠ WARNING

- Know the Working Load Limit of the block, or blocks, to be used.
DO NOT EXCEED THE WORKING LOAD LIMIT.
- Working Loads are Resultant Working Loads.

Extra Heavy, Iron Sheaves for Wire Rope (cont.)

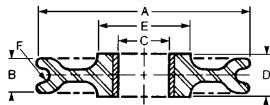
Specifications																	
"A" Outside Diameter in. mm		"B" Rim Width in. mm		"C" Pin Diameter in. mm		"D" Hub Width in. mm		"E" Hub Diameter in. mm		"F" Maximum Wire Rope in. mm		Iron Bushed		Bronze Bushed Self-lube			
												Cat. No.	UPC No. 020418	Cat. No.	UPC No. 020418		
8	203	1	25	3/4	19	1 1/16	27	2 1/8	54	1/2	13	6 1/4	2.84	7351722	127038	7361722	127885
8	203	1	25	7/8	22	1 1/16	27	2 1/8	54	1/2	13	6 1/4	2.84	-	-	7361822	127908
8	203	1	25	1	25	1 1/16	27	2 1/8	54	7/8	22	6 1/4	2.84	-	-	7361922	127915
8	203	1 1/4	32	3/4	19	1 3/8	35	2 1/16	52	5/8	16	7 1/2	3.40	-	-	7362022	127922
8	203	1 1/4	32	7/8	22	1 3/8	35	2 1/16	52	5/8	16	7 1/2	3.40	-	-	7362122	127939
8	203	1 1/4	32	1	25	1 3/8	35	2 1/16	52	5/8	16	7 1/2	3.40	-	-	7362222	127977
8	203	1 1/4	32	1 1/4	32	1 3/8	35	3 1/4	83	5/8	16	7 1/2	3.40	-	-	7362322	127984
8	203	1 1/4	32	1	25	1 5/8	41	2 3/4	70	3/4	19	8 3/4	3.97	-	-	7362522	128004
10	254	1	25	7/8	22	1 1/8	29	4	102	1/2	13	14 1/4	6.46	-	-	7362822	128035
10	254	1	25	1	25	1 1/8	29	4	102	1/2	13	14 1/4	6.46	7352922	127151	7362922	128042
10	254	1 1/4	32	1	25	1 3/8	35	3	76	5/8	16	13	5.90	-	-	7363122	128066
10	254	1 1/2	38	1 1/2	38	1 5/8	41	3 1/4	83	3/4	19	15 3/4	7.14	-	-	7363522	128134
12	305	1	25	1	25	1 1/8	29	3	76	1/2	13	16 1/2	7.48	-	-	▽ 7365722	128387
12	305	1 1/2	38	2	51	1 5/8	41	5	127	3/4	19	29 3/4	13.49	-	-	▽ 7366622	128387

Note: ▽ These items are made to order.

Bronze Bushed Steel Sheaves for Wire Rope



4241



- Forged steel sheaves
- Available with bronze, self-lubricating bushings or with grooved bronze bushings for pressure greased lubrication
- Painted or galvanized finish
- Other sizes and types from 3 in. to 32 in. in diameter, available upon request

Specifications															
"A" Outside Diameter in. mm		"B" Rim Width in. mm		"C" Pin Diameter in. mm		"D" Hub Width in. mm		"E" Hub Diameter in. mm		"F" Maximum Wire Rope in. mm		Bronze Bushed Self-lube, Painted			
												Cat. No.	UPC No. 020418		
3	76	3/4	19	1/2	13	1 3/16	21	1 1/2	38	3/8	10	1	0.45	7375311	129216
4	102	3/4	19	1/2	13	1 3/16	21	2	51	3/8	10	2	0.90	7370111	128646
4	102	1	25	1	25	1 1/16	27	2	51	1/2	13	2 1/2	1.13	7376611	129346
6	152	3/4	19	3/4	19	1 3/16	21	2	51	3/8	10	2 3/4	1.25	▽ 7376811	129360
8	203	1	25	3/4	19	1 1/16	27	3	76	1/2	13	7	3.18	▽ 7375511	129230
8	203	1	25	1	25	1 1/16	27	2 3/4	70	1/2	13	7	3.18	▽ 7378011	129506
8	203	1 1/4	32	3/4	19	1 3/8	35	2 3/4	70	5/8	16	8	3.63	7370911	128769
8	203	1 1/4	32	1	25	1 3/8	35	2 3/4	70	5/8	16	8	3.63	7371111	128806
8	203	1 1/4	32	1 1/4	32	1 3/8	35	2 3/4	70	5/8	16	8	3.63	7371211	128820

Note: ▽ These items are made to order.

⚠ ADVERTENCIA

- Antes de usar las pastecas, conozca el limite de carga de trabajo de los mismos.
NO EXCEEDA EL LIMITE DE CARGA DE TRABAJO.
- Las cargas de trabajo son las fuerzas resultantes de las cargas de trabajo.

⚠ WARNING

- Know the Working Load Limit of the block, or blocks, to be used.
DO NOT EXCEED THE WORKING LOAD LIMIT.
- Working Loads are Resultant Working Loads.

Bosloc, Winch Rope Hook, 5015

- Used for pulling and lifting poles
- Drop forged steel
- Serves as choker at the end of a truck-mounted winch line



Size in.	mm	Cat. No.	UPC No. 020418	Length		Opening		Weight	
				in.	mm	in.	mm	lb	kg
1/2	13	7381401	130014	8	203	9/16	14	5	2
5/8	16	7381501	130021	8	203	11/16	17	5	2

Lineman's Snatch Block, 5022

- For stringing light conductor cable
- Hook fits around insulator pin or in the insulator hole, which can be driven into a pole or cross arm
- Available with or without hook
- Available bronze, self-lubricating bushings or roller bushed bearings



Description	Bronze Bushed, SL		Roller Bushed		
	Cat. No.	UPC No. 020418	Cat. No.	UPC 020418	Weight lb kg
With Hook	7380602	129841	7380601	129834	2 1/2 1.13
Without Hook	7380603	129858	7380604	129865	2 1/4 1.02

Light Wire Blocks, 5023

- Used to take slack out of light wire
- Assembly locks when fall line is pulled to one side and releases when pulled to a straight position
- Galvanized for 3/8 in. rope
- Rope not included (shown for illustration purposes only)



Cat. No.	UPC No. 020418	Weight	
		lb	kg
7380701	129872	2 1/4	1.02

⚠ ADVERTENCIA

- Antes de usar las pastecas, conozca el limite de carga de trabajo de los mismos.
NO EXCEEDA EL LIMITE DE CARGA DE TRABAJO.
- Las cargas de trabajo son las fuerzas resultantes de las cargas de trabajo.

⚠ WARNING

- Know the Working Load Limit of the block, or blocks, to be used.
DO NOT EXCEED THE WORKING LOAD LIMIT.
- Working Loads are Resultant Working Loads.

Drop Forged Steel Cargo Hooks



6124

Figure Number	Pattern	Size	Cat. No.	UPC No. 020418	Hook Length		Working Load Limit		Weight	
					in.	mm	ton	kg	lb	kg
6124	Portland	23	TF3899523	155963	13	330	10	9072	14½	7

Drop Forged, Galvanized Hooks



4184

Specifications, 4184												
Hook No.	Cat. No.	UPC No. 020418	Length		Swivel Size		Throat Opening		Weight		Working Load Limit	
			in.	mm	in.	mm	in.	mm	lb	kg	ton	kg
2	3896235	070464	5 7/16	138	3/8	10	1	25	1	0.5	3/4	680

Fisherman's Galvanized Blocks, Lobster, 6151



- Manila rope sheave with pressure greased lubrication sheave pin
- Latched swivel hook is drop forged
- Working load limit 500 lb.

Sheave Size		Cat. No.	UPC No. 020418	Weight		Connection
in.	mm			lb	kg	
3 x 1 3/8 x 3/4	76 x 35 x 19	7381301	130007	5	2	Hook

⚠ ADVERTENCIA

- Antes de usar las pastecas, conozca el limite de carga de trabajo de los mismos.
NO EXCEEDA EL LIMITE DE CARGA DE TRABAJO.
- Las cargas de trabajo son las fuerzas resultantes de las cargas de trabajo.

⚠ WARNING

- Know the Working Load Limit of the block, or blocks, to be used.
DO NOT EXCEED THE WORKING LOAD LIMIT.
- Working Loads are Resultant Working Loads.

Purse Seine, 6152, 6153

- Forged steel shells
- Bronze self-lubricating bushings, galvanized
- For manila rope

Figure Number	Sheave Size		Cat. No.	UPC No. 020418	Rope Dia.		Weight	
	in.	mm			in.	mm	lb	kg
6153	3 x 3/4 x 3/8	76 x 19 x 10	7381101	129988	5/8	16	3 3/4	2



Try Net, 6150T

- Forged steel swivel eye
- Hardened steel sheave for wear resistance
- Bronze bushing with pressure greased lubrication

Cat. No.	UPC No. 020418	Working Load Limit		Weight	
		ton	kg	lb	kg
7399058	130472	3	2722	19	9
7399158	130496	5	4536	22	10



Tuna, 6191H

- Steel sheaves with bronze bushings with pressure greased lubrication
- 25 inches long overall
- For 5/8 in. wire rope
- 8 in. diameter sheave

Cat. No.	UPC No. 020418	Working Load Limit		Weight	
		ton	kg	lb	kg
7399079	130489	15	13608	77	35



⚠ ADVERTENCIA

- Antes de usar las pastecas, conozca el limite de carga de trabajo de los mismos.
NO EXCEEDA EL LIMITE DE CARGA DE TRABAJO.
- Las cargas de trabajo son las fuerzas resultantes de las cargas de trabajo.

⚠ WARNING

- Know the Working Load Limit of the block, or blocks, to be used.
DO NOT EXCEED THE WORKING LOAD LIMIT.
- Working Loads are Resultant Working Loads.