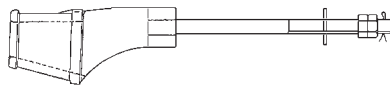




**INDUSTRIES LTD.**

[www.wescovan.com](http://www.wescovan.com)

# ELEVATOR PRODUCTS



Head Office: Unit 1, 9663-199A Street Langley BC V1M 2X7  
Phone: 604 881 3000 Fax: 604 881 3010  
Email: [info@wescovan.com](mailto:info@wescovan.com)

Rigging Centre: 2437 Beta Avenue Burnaby BC V5C 5N1  
Phone: 604 292 1220 Fax: 604 292 1222  
Email: [burnaby@wescovan.com](mailto:burnaby@wescovan.com)

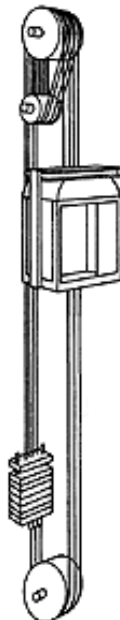


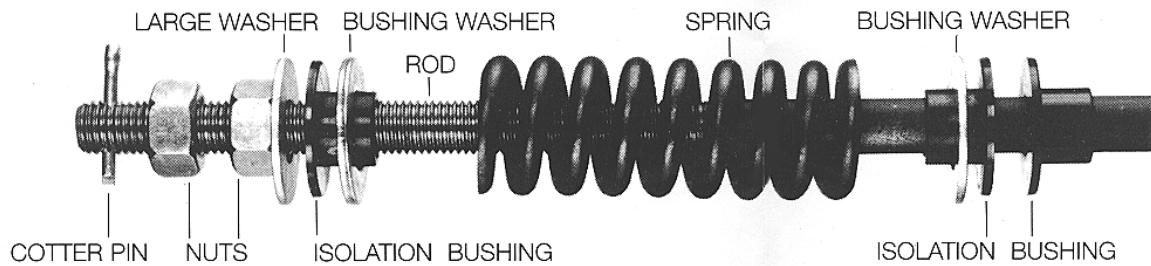
## Powerstrand 8 x 19 Elevator Rope

Diameter Inches	Stock Code	Description	Breaking Strength Pounds	Weight per 100 Feet Pounds
3/8	W81912C1	8X(Seale)19 Sisal Core	8,200	20
1/2	W81916C1	8X(Seale)19 Sisal Core	14,500	36
5/8	W81920C1	8X(Seale)19 Sisal Core	23,000	57

Powerstrand elevator wire rope is manufactured to Industry Specifications and is 1370/1770 traction steel grade.

Powerstrand rope is manufactured using the highest quality material and is produced to stringent quality controls which is ISO 9001 certified.





## Elevator Motors Corporations Spring Isolation Bushing Assemblies

Elevator Rope Diameter Inches	Stock Code	Spring Wire Dia x Length Inches	Weight Each Pounds
1/2	60EMCO-EM0901	3/8 X 5	1.46
5/8	60EMCO-EM1001	1/2 X 4 3/4	2.00

**Spring Isolation Bushing Assemblies provide:**

- 1. Equal tension on all wire ropes.**
- 2. Isolation of all metal parts between sockets, springs and hitch plate for noiseless operation. Spring Isolation Bushing Assemblies are provided with springs, bushings and washer specifically sized for the speed and capacity of elevators. There are two basic models; EM 901 and EM 1001. Others available for heavy duty and high rise cars.**

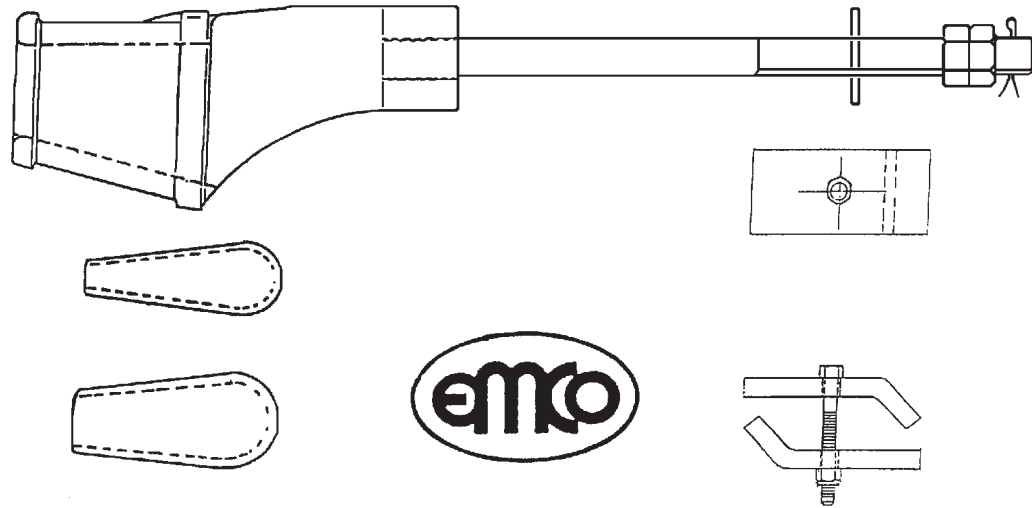
**Spring Isolation Bushing Assemblies include: 1 only spring, 3 only plastic bushings, 3 only metal washers.**

**Elevator Motors Corporation Supplier Members:**

**National Association of Elevator Contractors**

**Canadian Elevator Contractor Association**

**National Association of Elevator Safety Authorities**



## Elevator Motors Corporation Elevator Cable Socket Assemblies

Elevator Rope Diameter Inches	Stock Code	Rod Length Inches	Weight Each Pounds
3/8	60EMCO-101-24	24	4
1/2	60EMCO-201-18	18	7
1/2	60EMCO-201-24	24	8
5/8	60EMCO-202-18	18	7
5/8	60EMCO-202-24	24	8

**Elevator Motors Corporations cable socket assemblies exceeds ANSI 17.1 requirements**

**EMCO 200 Series cable socket assemblies feature:**

- 1) Sockets-cast Steel ASTM-A27, Grade 60-30 Stress Relieved
- 2) 3/4 inch rods complete with 3/4-10 UNC fine nuts
- 3) Wedges-cast Steel ASTM-A27
- 4) Wire rope retaining clips-ASTM A36 zinc plated

**All cable socket assemblies include: socket, wedge, roll pin, nuts, cotter pin, washer, and 2 wire retaining clips. Other types, sizes and lengths available on request.**



# INDUSTRIES LTD.

[www.wescovan.com](http://www.wescovan.com)

Head Office: Unit 1, 9663-199A Street  
Langley BC V1M 2X7  
Phone: 604 881 3000  
Fax: 604 881 3010  
Email: [info@wescovan.com](mailto:info@wescovan.com)

Rigging Centre: 2437 Beta Avenue  
Burnaby BC V5C 5N1  
Phone: 604 292 1220  
Fax: 604 292 1222  
Email: [burnaby@wescovan.com](mailto:burnaby@wescovan.com)

## Distributors of:

**Wire Rope & Fittings** - Powerstrand, Esco, Crosby, Campbell.

Wire Rope all types of constructions and diameters, Wire Rope Fittings, Wire Rope Assemblies, Grips, Hooks, & Links.

**Slings** - Powerstrand, Gunnebo, Campbell, Procraft.

Wire Rope, Chain, Webbing, Endless Polyester & Rope.

**Chain & Fittings** - Campbell, Gunnebo - Grabiq, Procraft.

Grade 30, Mooring & Lashing, Grade 70, 80 & 100.

**Hoists & Trolleys** - Columbus Mckinnon, Coffing & Campbell.

Chain Hoists, Lever Hoists, Cummalongs, Electric Hoists, Air Hoists, Winches, Beam Clamps & Trolleys.

**Lifting Equipment** - CM, Merrill, Terrier, Johnson, Rud, Crosby.

Shackles, Hooks, Plate Clamps, Crane Blocks, Eyebolts, Turnbuckles.

**Cordage** - Novatec Braid, Samson, Procraft.

Double Braid, 12 Strand, 8 Strand, 3 Strand & Cords.

**Towing & Tie Down** - Procraft, CM, Crosby.

Loadbinders, Straps, Chain & Hooks, & Wire Rope Assemblies.

## Industries Supplied:

Crane, Construction, Logging, Marine, Industrial, Towing, Entertainment, Elevator, Mining, Offshore Oil & Gas, Fishing, Forestry, Utilities, Steel Works & Rigging.



**COOPER Tools**  
**Campbell®**

**ProCraft®**



**the Crosby group, INC.**

